

CERTIFICATE OF LOCATION OF GOVERNMENT CORNER

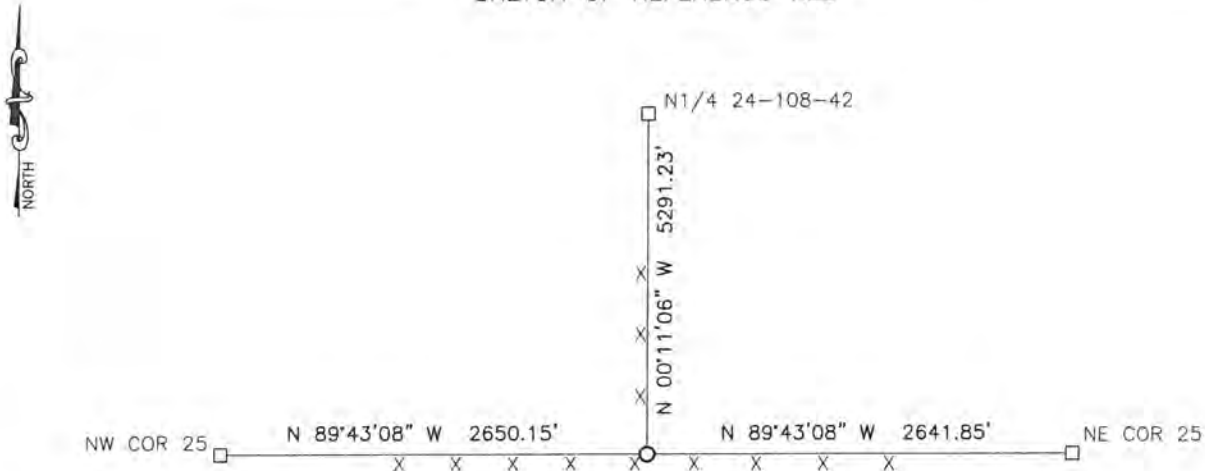
NORTH QUARTER Corner of Section 25, Township 108, Range 42, 5TH P.M.

STATE OF MINNESOTA, County of MURRAY

At the corner location shown on the sketch:

- On _____ found a _____
DATE
- left monument as found, lowered monument, removed monument (explain)
- On 10/14/16 placed a 5/8" iron with seal #43844
DATE

SKETCH OF REFERENCE TIES



Minnesota State Plane Coordinate
System Murray County Datum
NAD83 (1996)
N: 205836.411
E: 482469.499

Statement of evidence relative to this corner location is on back of page.

I hereby certify that this document and the data contained herein was prepared by me or under my direct supervision.

[Signature] 1/30/17
SIGNATURE DATE

Registration No. 43844

- Land Surveyor, Professional Engineer
- County Surveyor, County Engineer

OFFICE OF THE COUNTY RECORDER

County of MURRAY

I hereby certify that this document was filed in the Co. Recorders office at 9:00 A.M on the 17TH day of FEBRUARY A.D. 20 17

County Recorder Evelyn C. Larson

By _____, Deputy

DOCUMENT NO. _____

Statement of Evidence

In September, 1861, L.G.W. Fletcher did the original subdivision of the township.

On April 20, 1907, J.W. Woolstencroft set a concrete stone midway and on line between section corners.

On October 14, 2016, Bueltel-Moseng Land Surveying set a 5/8" iron with seal #43844 on line between section corners and in line with fence to the north. It is in line with east-west fence.